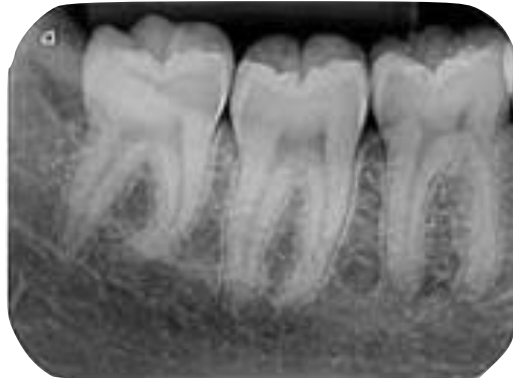


Modern dental x-ray dose

Dental X-rays are very safe, and when using modern equipment there is a very low effective dose



Dose from eating 1 banana = 0.1 μ Sv



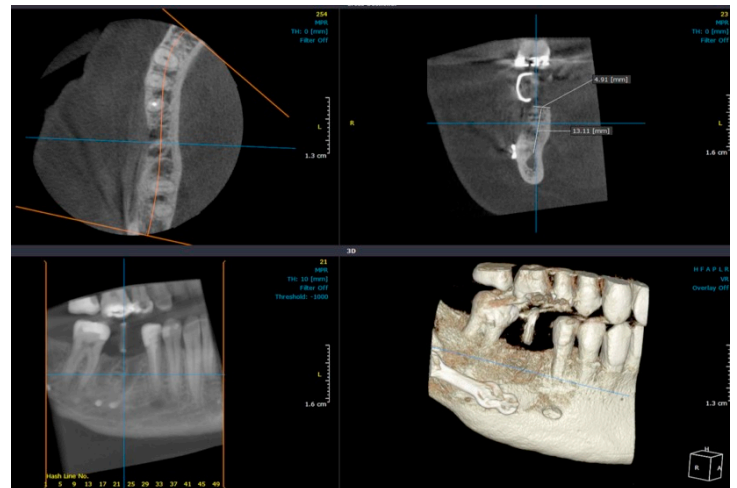
Dose from 1 IOPA with digital system and rectangular collimation = 1-5 μ Sv



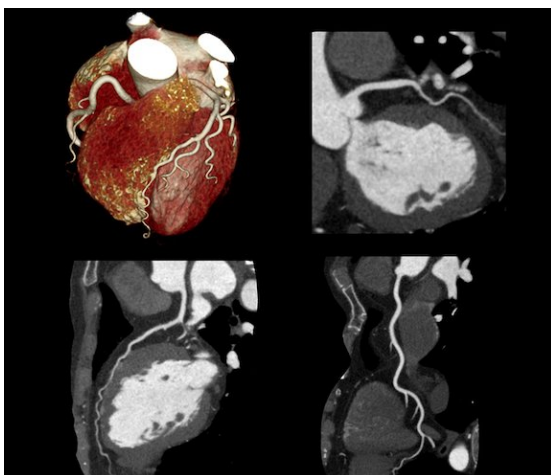
Dose from return New York to London flight = 56 μ Sv



Dose from full DPT with a digital system = 20-25 μ Sv



Dose from small volume CBCT on modern CBCT scanner = 5-50 μ Sv



Dose from coronary CT angiogram = 16,000 μ Sv

Data collected from FDA website, CDC, DMFR journal, PHE website, The Guardian, The New York Times and for illustration only. Exact dose measurements should be calculated for the specific machine in use.



Dose from UK average annual background radiation = 2,700 μ Sv

